

*intelligent* Robotic  
Process Automation  
Capabilities

MANTRA LABS

# Mantra Labs

Customer Experience and Design Consulting.  
Full-Stack Development in Industry Frameworks.  
Deep Expertise in AI/ML, DevOps, ERP and iRPA.

## Domains



InsurTech



Product &  
Innovation



Consumer  
Internet

## Key Partnerships



80+ Projects



150+ Experts



3 Offices



Mantra.AI



Mantra.Design



# The iRPA Opportunity

02

4M

Robots doing office work by 2021

30-45%

Estimated efficiency improvement

50-75%

Activities that can be automated

\$8.75B

Projected market size by 2024

\$7.5T

In rule based work



# Key Benefits

03



Productivity



Efficiency



Operational Improvement

## Productivity

Process Efficiency

upto  
**80%**

Operational Cost

upto  
**40%**

Dramatic increase in speed

## Value Add

Better decision Quality  
Increased revenue  
Increased margins

Time Saving



Insights



Analytics & Optimization



# iRPA - Components

04

## Action Automation



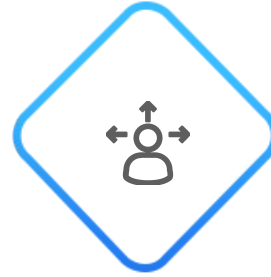
Connects to system  
& focused on high  
volume and  
role-based activities

## Analysis Automation



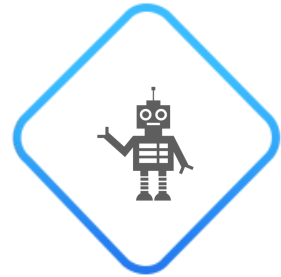
Automated  
interpretation with  
image processing &  
natural language  
processing.

## Decision Automation



Automate a decision  
or recommendation  
to a user

## Learning Robots



Observe patterns  
Process historical  
data to train model



# Our iRPA Methodology

05

We are building consulting expertise in Finance, Operations and Insurance which involve complex workflows, exception scenarios, compliance requirements and data quality.

Our iRPA Execution Strategy involves the following steps.

## Process Consulting

Understand existing processes, Identify RPA opportunities and Optimize implementation flows.

## RPA Roadmap

Across the value - chain, define the roadmap based on technology, business and operational feasibility.

## POC Execution

Identify a use-case with significant business impact doable in a doable in a measurable time-frame

## Full-Scale Roll-out

Based on learnings from POC, execute the complete RPA Roadmap using Agile Methodology.



# Our Capabilities

---

06

- ▶ Extensive experience of delivering AI/ML solutions in the areas of Natural Language Processing, Speech, Vision, Image processing and Deep Learning for clients like Edureka, Religare and others. Please find the details at [www.mantra.ai](http://www.mantra.ai)
- ▶ Expertise with UiPath, the most cost-effective tool for Cognitive - Robotic Process Automation.
- ▶ Deep Expertise in large-scale enterprise systems with multiple integrations in domains like Banking, Payments & Insurance.



# Our Clients

07

We are working closely with **Religare** on their RPA Strategy for identifying manual processes around claims filing, processing and record verification and creating roadmap for using Intelligent Character Recognition and built-in capabilities of UiPath.

## Our Other Major Enterprise & Startup Clients

**edureka!**





*fin.*

 +919740495689     hello@mantralabsglobal.com

 414, HRBR Layout, Bangalore-43

